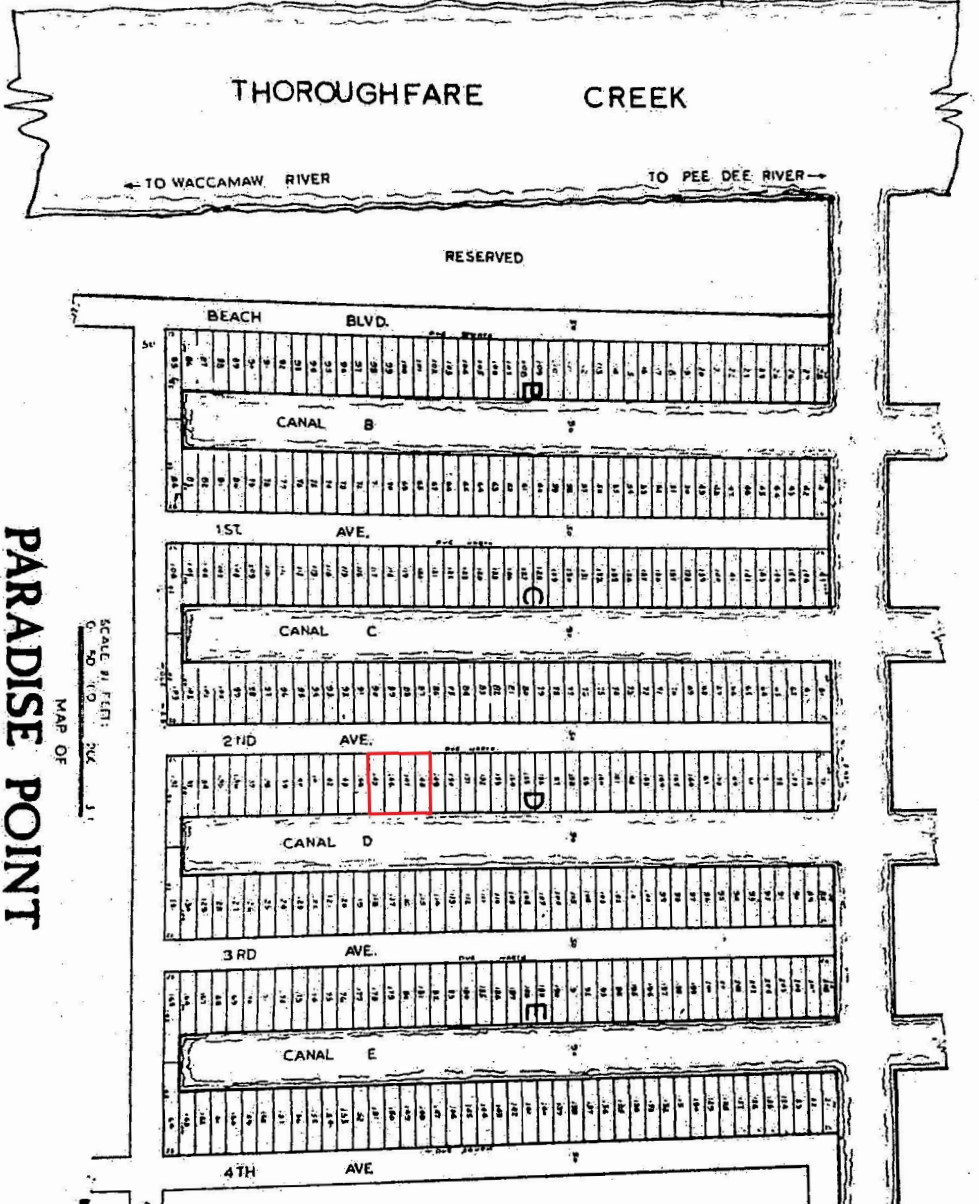


FILED
DESSIE F. BETAN COURT
C. C. P. & S.

JUN 25 1 49 PM '71

BOOK PAGE 222

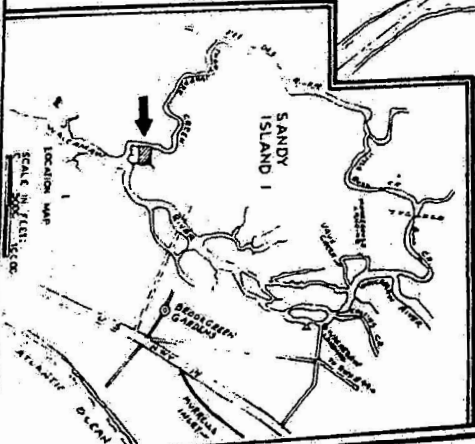
Walter P. Williams
Deputy Clerk



MAP OF
PARADISE POINT
ADDITION NO. 1
A SUBDIVISION ON
SANDY ISLAND
GEORGETOWN COUNTY, S. C.
OWNED BY
SANDY ISLAND DEVELOPMENT CORPORATION

SCALE IN FEET:
0 50 100 150 200

C. B. BERN, P. E. S.
NORTH KNILE BEACH, S. C.
APRIL 23, 1971



RD AVE.

DUE NORTH

50

166
165
164
163
162
161
160
159
158
157
156
155
D
154
153
152
151
150
149
148
147
146
145
144
143
142
141
140
139
138
137
136
135
134
133
132
131
130
129
128
127
126

CANAL D

90

126
125
124
123
122
121
120
119
118
117
116
115
114
113
112
111
110
109
108
107
106
105
104
103
102
101
100
99
98
97

RD AVE.

DUE NORTH

50

179
180
181
182
183
184
185
186
187
188
E
189
190
191
192
193
194
195
196
197
198
199

CANAL E

9