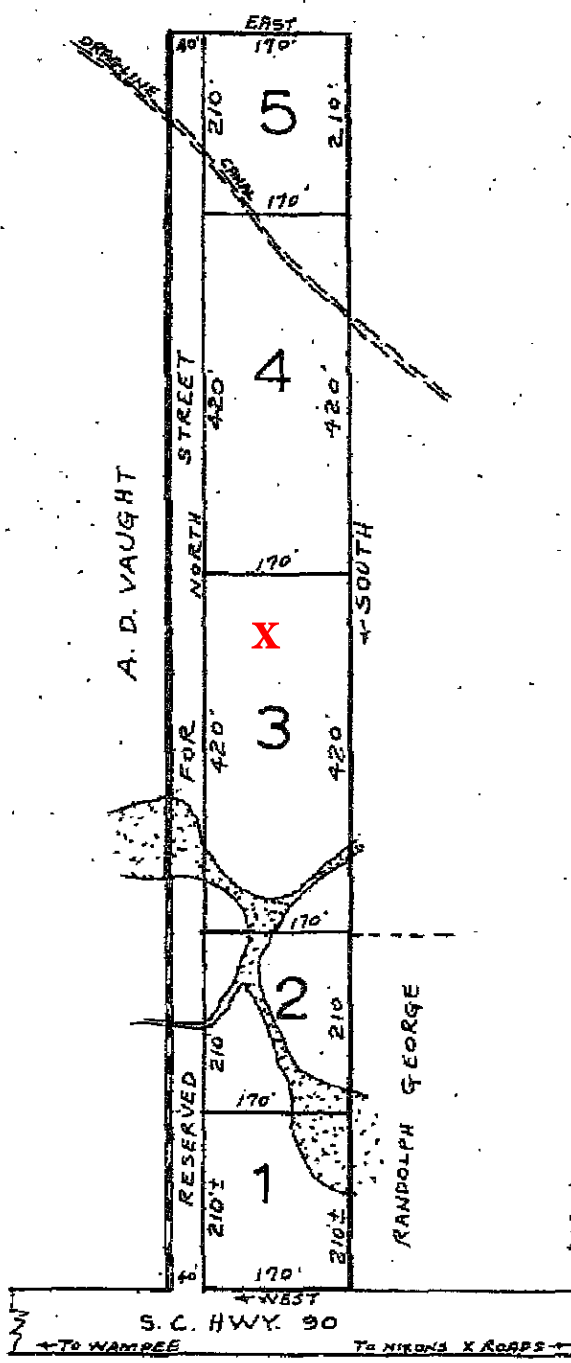


40



SCALE: 1" = 200'

MAP OF
 FIVE LOTS MAPPED IN A
 TRACT OF SEVEN ACRES DE-
 SCRIBED IN A DEED DATED
 15 JAN. 1953, RECORDED IN
 DEED BOOK 148, PAGE 463
 Horry County Records,
 FROM HENRY EVANS TO ALBERTA
 BELLAMY.

NEAR NIXONS CROSS ROADS
 LITTLE RIVER TOWNSHIP
 Horry County, S. C.

- OWNED BY
- LOT 1 - NOT SOLD - HELD BY ALBERTA BELLAMY
 - LOT 2 - THELMA HARDEE
 - LOT 3 - JAMES BELLAMY
 - LOT 4 - RALEIGH BELLAMY
 - LOT 5 - RUTH MELVIN

C. B. BERRY, R. L. S.
 CRESCENT BEACH S. C.
 AUGUST 28, 1967